

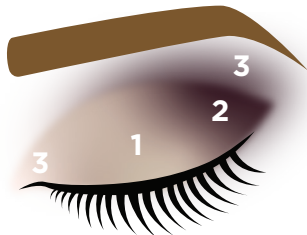
AFTER THE STORM

EYE SHADOW PALETTE



seibella
WELLNESS INSPIRED BEAUTY

LOOK
1

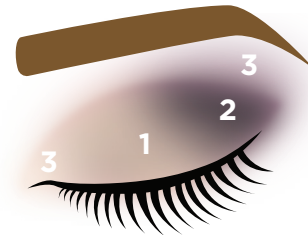


Step 1: Cover your eyelid with the shade **Dew Drop**, leaving the inner corner of your eye untouched.

Step 2: Use the shade **Wet Earth** to add dimension by shading the crease of your eye from outer corner to middle. Using the *Sei Bella Blending Brush*, blend the edges of the crease to reduce any harshness.

Step 3: Finish the look by placing **Cloud** at the inner corner of your eye and on your brow bone for an open, lifted appearance.

LOOK
2

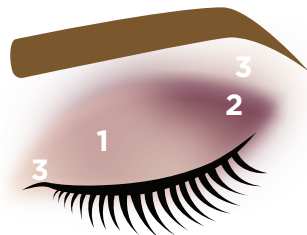


Step 1: Cover your eyelid with the shade **Dew Drop**, leaving the inner corner of your eye untouched.

Step 2: Use the shade **Fog** to add dimension by shading the crease of your eye from outer corner to middle. Using the *Sei Bella Blending Brush*, blend the edges of the crease to diffuse any harsh lines.

Step 3: Finish the look by placing **Cloud** at the inner corner of your eye and on your brow bone for an open, lifted appearance.

LOOK
3

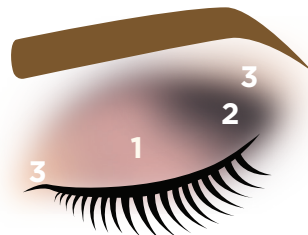


Step 1: Cover your eyelid with base shade **Tranquil**.

Step 2: Use the shade **Wet Earth** to add dimension by deepening the outer corner of your crease, blending from outer corner to middle.

Step 3: Finish the look by placing **Cloud** at the inner corner of your eye and on your brow bone for an open, lifted appearance.

LOOK
4



Step 1: Cover your eyelid with the shade **Tranquil**, leaving the inner corner of your eye untouched.

Step 2: Use the shade **Thunder** to add dimension by shading the crease of your eye from outer corner to middle. Using the *Sei Bella Blending Brush*, blend the edges of the crease to diffuse any harsh lines.

Step 3: Finish the look by placing **Cloud** at the inner corner of your eye and on your brow bone for an open, lifted appearance.

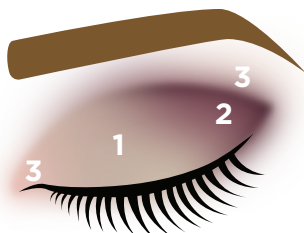
AFTER THE STORM

EYE SHADOW PALETTE



seibella
WELLNESS INSPIRED BEAUTY

LOOK
5

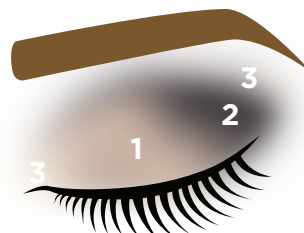


Step 1: Cover your eyelid with shade **Dew Drop** as a base to build on.

Step 2: Layer **Wet Earth** over the base shade, leaving the inner corner of your eye untouched.

Step 3: Finish the look by placing **Rose Glow** at the inner corner of your eye and on your brow bone.

LOOK
6

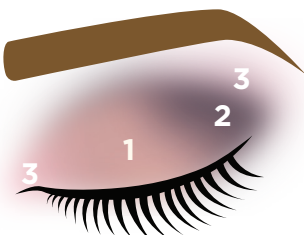


Step 1: Cover your eyelid with shade **Dew Drop**, leaving the inner corner of your eye untouched.

Step 2: Use the shade **Thunder** to add dimension by crease of your eye from outer corner to middle. Using the *Sei Bella Blending Brush*, blend the edges of the crease to diffuse any harsh lines.

Step 3: Finish the look by placing **Cloud** at the inner corner of your eye and on your brow bone for an open, lifted appearance.

LOOK
7

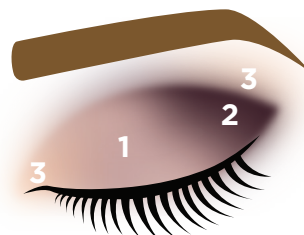


Step 1: Cover your eyelid with shade **Tranquil**, leaving the inner corner of your eye untouched.

Step 2: Use the shade **Fog** to add dimension by shading from the outer corner of the crease to the middle of the crease.

Step 3: Finish the look by placing **Bloom** at the inner corner of your eye and on your brow bone for an open, lifted appearance.

LOOK
8



Step 1: Cover your eyelid with the shade **Tranquil**, leaving the inner corner of your eye untouched.

Step 2: Use the shade **Wet Earth** to add dimension by shading the crease of your eye from outer corner to middle. Using the *Sei Bella Blending Brush*, blend the edges of the crease to diffuse any harsh lines.

Step 3: Finish the look by placing **Gleam** at the inner corner of your eye and on your brow bone for an open, lifted appearance.